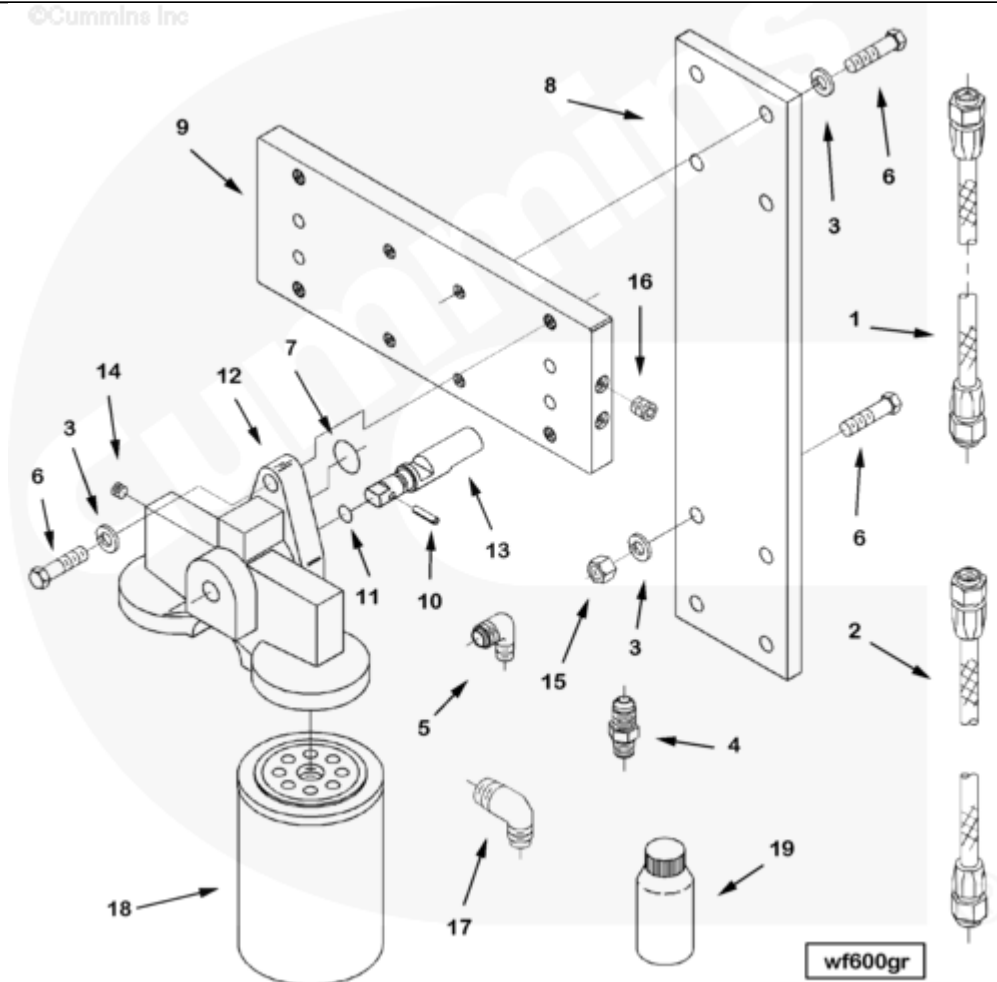




## Parts Catalog - Option Detail

Electronic Parts Catalog - Option Detail				
Option	Group	Graphic	Film Card	Date
WF6008-05	08.08	wf600gr	K38	01-JAN-02
<b>Engines</b>	GTA38, K38, KTA38GC CM558, QSK38 CM2150 K106, QSK38 CM2150 MCRS, QSK38 CM850 MCRS			



SMALL | MEDIUM | LARGE

Cart	Ref No	Part Number	Part Description	Required	Remarks
View My Cart					
		WF6008-05	Water Filter		<a href="#">Dual DC4 corrosion resistors...(More)</a>
					with dual replaceable spin-on
					cartridges, assembled to the
					manifold and mounting plate,

					plus three 20 unit containers
					of DC4 inhibitor supplied in
					the kit. Includes fittings
					and hoses for customer
					mounting to customer supplied
					subbase. Includes resistor
					cartridges 5.3inches in
					length. Sized for cooling
					systems between 384 quart and
					720quart capacity for
					radiator or remote cooling
					systems.
<input type="checkbox"/>	1	<a href="#">3634300</a>	Flexible Hose	1	
<input type="checkbox"/>	2	<a href="#">3634303</a>	Flexible Hose	1	
<input type="checkbox"/>	3	<a href="#">S 604</a>	Lock Washer	12	3/8 in.
<input type="checkbox"/>	4	<a href="#">S 1039 A</a>	Male Connector	1	
<input type="checkbox"/>	5	<a href="#">S 1040 A</a>	Male Adapter Elbow	2	
<input type="checkbox"/>	6	<a href="#">108707</a>	Hexagon Head Cap Screw	12	3/8 - 16 x 1 1/2 in.
<input type="checkbox"/>	7	<a href="#">145528</a>	O-Ring Seal	4	
<input type="checkbox"/>	8	<a href="#">3003470</a>	Corrosion Resistor Bracket	1	
<input type="checkbox"/>	9	<a href="#">3004845</a>	Water Manifold	1	
<input type="checkbox"/>		<a href="#">3175452</a>	Corrosion Resistor Head	2	
<input type="checkbox"/>	10	<a href="#">8306</a>	Roll Pin	2	
<input type="checkbox"/>	11	<a href="#">70415</a>	O-Ring Seal	2	
<input type="checkbox"/>	12	<a href="#">3175453</a>	Corrosion Resistor Head	2	
<input type="checkbox"/>	13	<a href="#">3177040</a>	Shut-Off Valve Shaft	1	
<input type="checkbox"/>	14	<a href="#">3628604</a>	Pipe Plug	3	1/8 - 27 X 0.3 in.
<input type="checkbox"/>	15	<a href="#">3201128</a>	Regular Hexagon Nut	4	3/8 - 16 UNC.
<input type="checkbox"/>	16	<a href="#">3628605</a>	Pipe Plug	2	1/4 - 18.
<input type="checkbox"/>	17	<a href="#">3629496</a>	Male Adapter Elbow	1	

<input type="checkbox"/>	18	<a href="#">3100308</a>	Corrosion Resistor	4	Buy from Cummins Filtration
<input type="checkbox"/>	19	<a href="#">3888312</a>	Corrosion Inhibitor	6	Buy from Cummins Filtration

© 2019 Cummins Inc., Box 3005, Columbus, IN 47202-3005 U.S.A.  
Terms of Use and Disclaimers | Recommended System Requirements  
Need Assistance? Please click on the Contact Us button in the top right corner of any page.